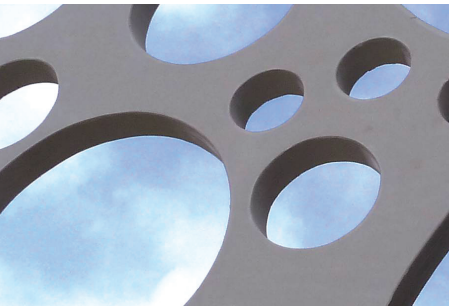


FACAD



UNIVERSITY OF SOUTHERN DENMARK, DK

FACTS

Year: 2014-15

Architect: C.F. Møller Architects

Location: Campusvej, DK - Odense

Hi-Con has delivered 300 elements in white CRC® to this unique screen facade at University of Southern Denmark.

The facade has a concrete/air ratio of 35/65. The thickness of each element is 65 mm.



LOCATION

Campusvej
DK-5000 Odense



Scan the code to view location
on [Google.com/maps](https://www.google.com/maps)

View more references at

www.hi-con.com

HiCON

HIGH PERFORMANCE CONCRETE