

HiCON



# STAIRCASES

in Ultra High Performance Concrete



Per Aarsleff, Aarhus, Denmark.

# WE MAKE YOUR DREAMS COME TRUE

The stairs from Hi-Con are tailor-made in Ultra High Performance Concrete (UHPC) and are customized for each individual project, ensuring the staircase harmonizes with the building's architectural style and function. We always utilize the unique properties of UHPC in our stair solutions, which means you get the freedom to shape the staircases aesthetically with a slender and minimalist design. Our goal is to create stair solutions that add value for architects, engineers, contractors, developers, and end-users.

## ADVANTAGES OF ULTRA HIGH PERFORMANCE CONCRETE

- Tailor-made solutions
- Slender and minimalistic design
- Freedom in design and aesthetic appeal
- 100+ years of durability
- No maintenance
- Easy installation
- Lightweight elements
- Fire resistant material

This brochure presents a selection of our stairs and special stairs, as well as the installation principles used. We hope this brochure inspires you to design exactly the stair solution you are dreaming of.

# CIRCULAR STAIRCASES

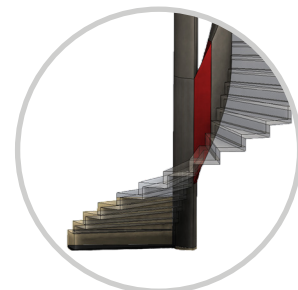
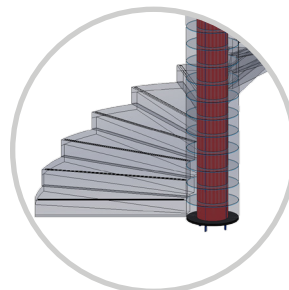
Circular staircases are characterized by their elegant, slender, and twisted design. Whether the solution becomes a spiral or a winding staircase, we can cast the steps with a thickness of only 50 mm.

## SPIRAL STAIRCASES

The spiral staircase is characterized by its revolving around a centrally located column. When the individual steps are stacked, they form a spiral, which is subsequently reinforced and cast. The spiral then becomes the supporting element and acts as the column which the steps twist around.

## WINDING STAIRCASES

A winding staircase is characterized by the opening in the center of the staircase. A winding staircase is not supported by a centrally placed column, but instead by an internal beam. A winding staircase often requires more space and comes in many elements that are assembled on-site with CRC i2® JointCast.





# DUNGEN

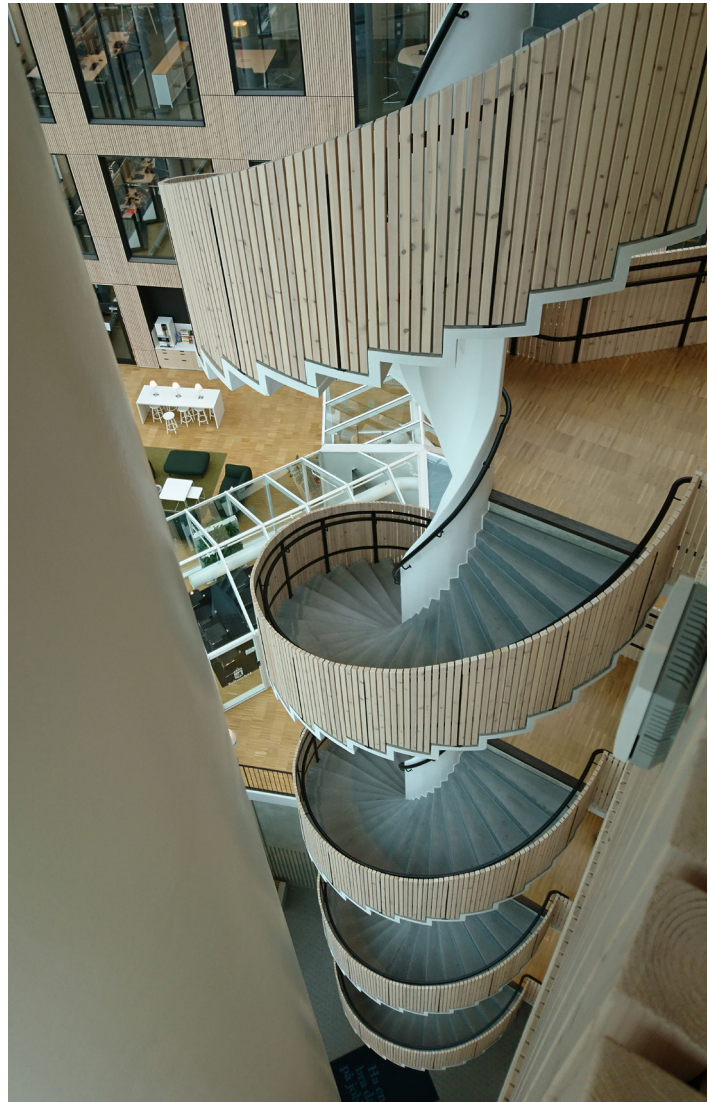
MALMÖ, SWEDEN

Type of staircase: Winding staircase

Architect: Forjab Arkitekter

Contractor: Thage

Year of construction: 2018



# PER AARSLEFF

AARHUS, DENMARK



Type of staircase: Winding staircase

Architect: Arkitema A/S

Contractor: A. Enggaard A/S

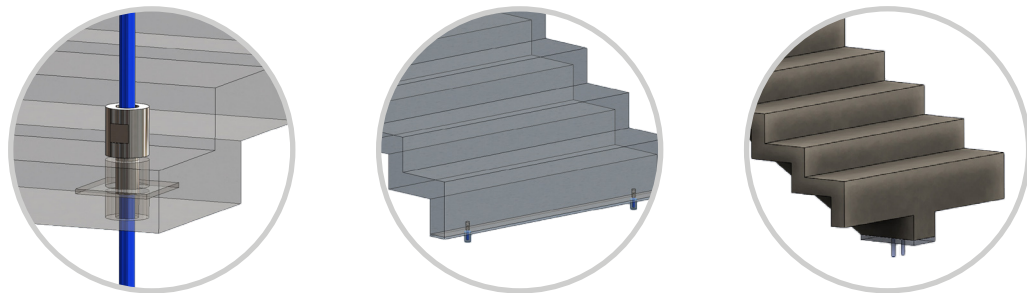
Year of construction: 2016



# ACCORDION STAIRCASES

An accordion staircase is a self-supporting staircase solution. If a solution with extra-long spans is needed, a beam is sometimes required to support the stairs in an integrated and elegant way. The steps can measure down to a thickness of 50 mm and have long durability. Like all our staircases, each accordion staircase is tailor-made.

A Hi-Con CRC i2® accordion staircase is a simple staircase with a light and elegant expression that is easy to install.





KAUPPAHALLIIN  
TILL SALUHALL



# TRAPPENHUIS

KANTOOR AMVEST, THE NETHERLANDS

Type of staircase: Accordion staircase

Architect: Rietveld New York

Contractor: De Nijs B.V.

Developer: Amvest

Year of construction: 2018



# SYDHAVNSKOLEN

KØBENHAVN, DENMARK



Type of staircase: Accordion staircase

Architect: JJW Arkitekter

Contractor: A. Enggaard

Year of construction: 2016



# CUSTOM STAIRCASES

Custom staircases are a unique solution that differs from the types of stairs mentioned earlier, designed for extraordinary requirements. This may be the case when developing a new installation principle, combining different types of stairs, using new shapes or colors etc. No challenge is too great - at Hi-Con, we like a challenge, and we would love to help make your dream come true.





Copenhagen Plant Science Center, Copenhagen, Denmark.

# COPENHAGEN PLANT SCIENCE CENTER

COPENHAGEN, DENMARK



Type of staircase: Custom staircase

Architect: Lundgaard & Tranberg  
Arkitekter

Contractor: EKJ A/S

Year of construction: 2015





Arting, Vejle, Denmark



# ARTING

VEJLE, DENMARK



Type of staircase: Custom staircase

Architect: Casa A/S

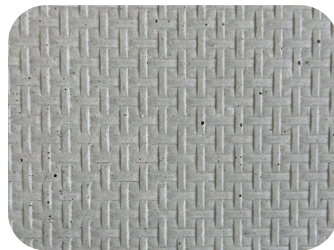
Contractor: Casa A/S

Year of construction: 2013



# UNLIMITED SURFACES

With UHPC, you get unparalleled opportunities to create surfaces with exactly the aesthetics and functionality you desire. We offer 8 standard surfaces as a starting point, but only your creativity sets the limits. Thousands of unique surfaces can be created to meet your project's needs and give your buildings character. We can also add reliefs and create unique imprints and patterns in the concrete, really bringing life and depth to your design.








Ultra High Performance Concrete (UHPC) is a type of concrete characterized by a strength range of 130-200 MPa, distinguishing it from other types of concrete such as fiber concrete and high-strength concrete. When you use UHPC, you are offered a light and slender solution, and you avoid complicated joints. Furthermore, UHPC offers a maintenance-free solution and a fire-safe construction that can be shaped and designed without limitations.

Hjallerup Erhvervspark 1  
DK-9320 Hjallerup  
Tel.: +45 98 28 37 20  
contact@hi-con.dk  
www.hi-con.dk

 Hi-Con ApS

 HICONCONCRETE

 HICONCRETE