

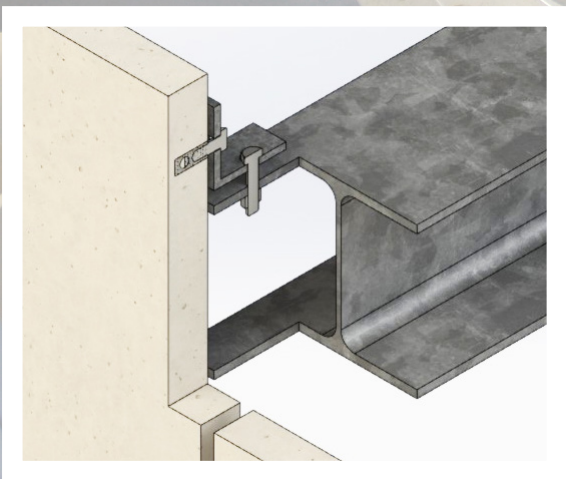
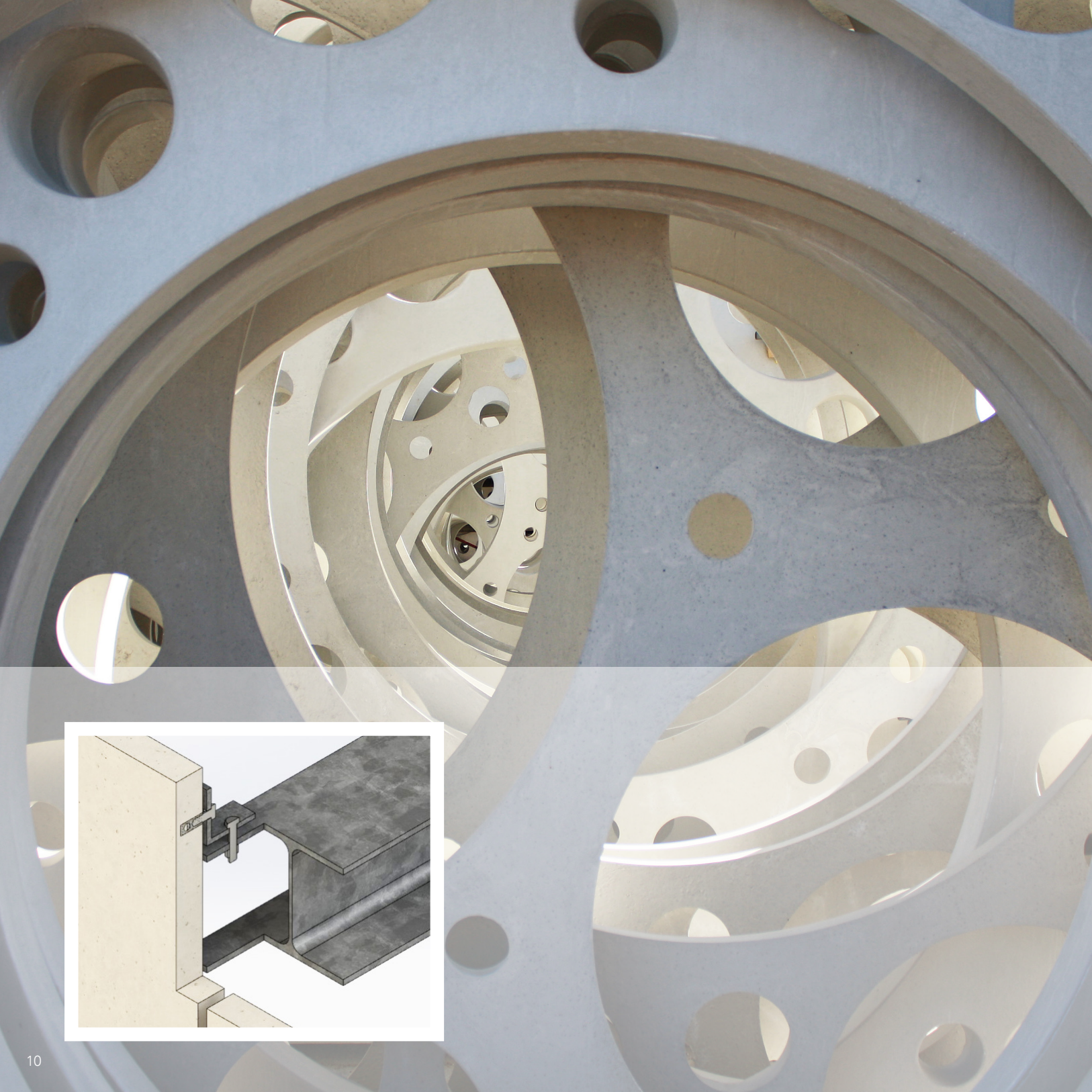
FACADES

in ultra high performance concrete



*Hi*CON

HIGH PERFORMANCE CONCRETE



CURTAIN WALLS

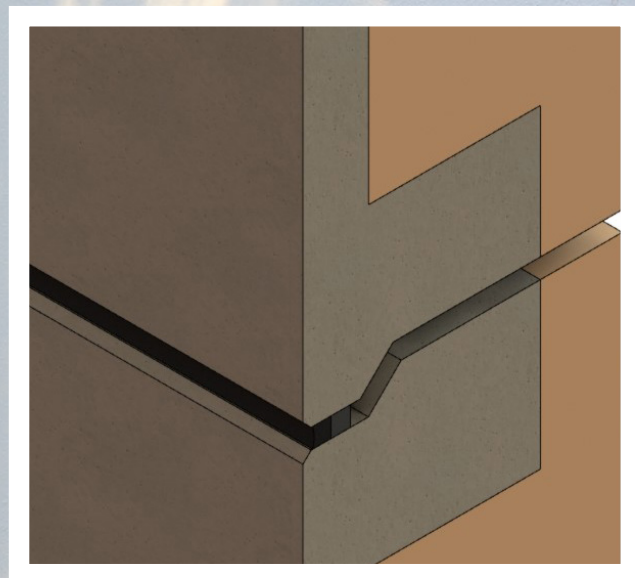
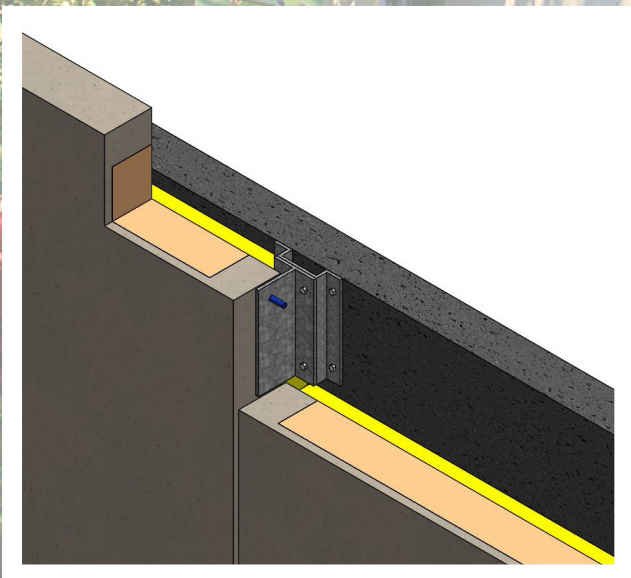
Curtain walls from Hi-Con can be developed and produced with an aesthetic goal in mind - and at the same time function as sun shields. For that purpose, it is possible to produce large format elements, which are tailored for each individual project and with endless design options.

At the same time, CRC i2® makes it possible to manufacture extremely slender and light-weight elements, which can be used to clad the facade. The elements can be cast with a thickness down to 45 mm.

Curtain wall elements in CRC i2® are especially suitable for projects where the architect has a dream to create a distinctive, unique, and aesthetically prominent facade. For this, Hi-Con can assist in developing bespoke curtain wall elements that help to create the architectural expression of the building yet at the same time living up to the architect's dreams and expectations of the project.

MOUNTING PRINCIPLES

The mounting principle used for curtain walls varies from project to project.
See example on page 10



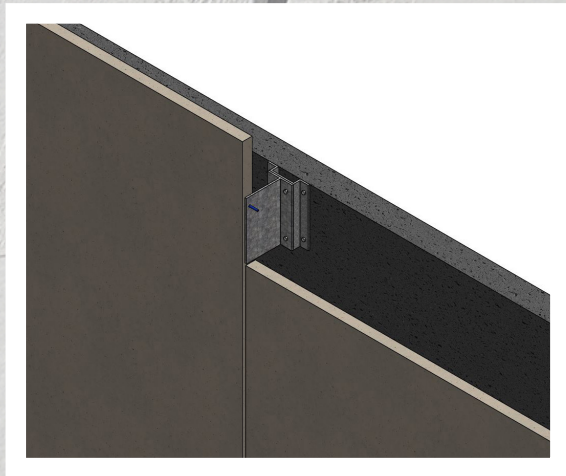
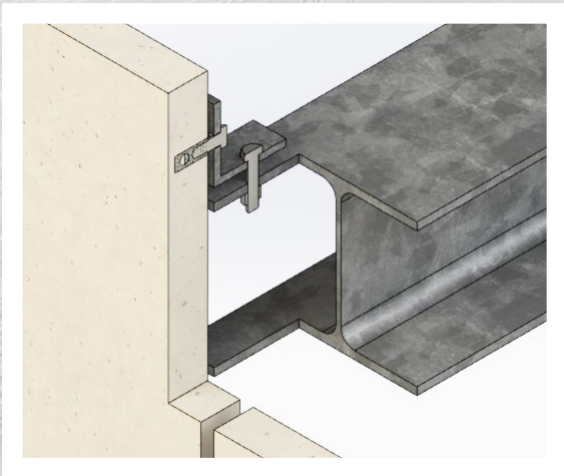
SINGLE-SIDED

Single-sided insulated facade elements from Hi-Con can be used for renovation and thermal insulations projects as well as new buildings. As the name implies, the elements are insulated with concrete on one side and can be mounted on an already existing back wall or a newly erected raw house. The single-sided insulated facade elements are suitable for renovation of an existing facade or cladding of a new back wall as they are slender, lightweight, and simple to install.

The facade elements can be cast with a thickness down to 30 mm and be manufactured as self-supporting elements with insulation. In addition, the strength and the density of the CRC i2® make it possible to produce large format elements, and you will also have the opportunity of designing the surface of the elements to fulfil your dreams of a unique aesthetic expression.

MOUNTING PRINCIPLES

The applied mounting principle for single-sided insulated facade elements is adapted to each individual project. See examples on page 18



CLADDING

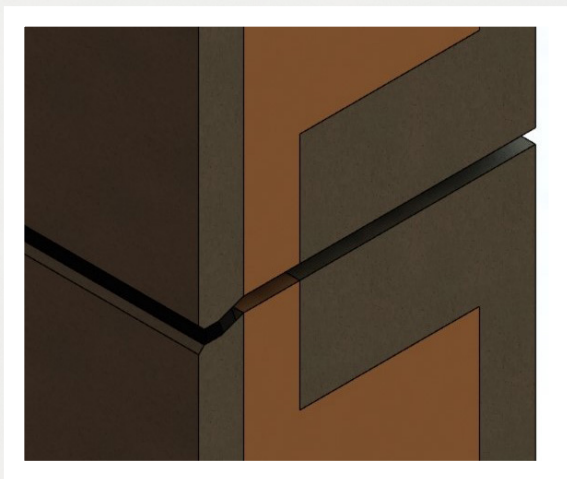
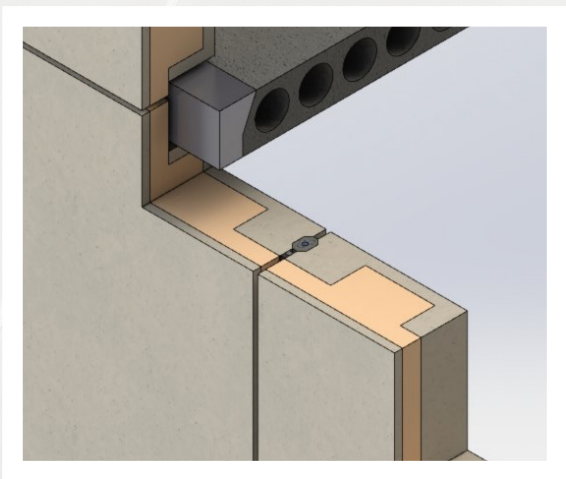
Hi-Con cladding elements are often used when special solutions and other cladding elements in connection with a facade solution are needed. Cladding elements are also useful to create uniformity between elements applied on the facade and thus create a complete building envelope.

With Hi-Con cladding elements it is possible to cast elements that help to create a nice overall impression of your building, while keeping elements lightweight and easy to install. This could e.g. be lightweight elements with glued bricks, cladding elements with the right surface colour, stern elements or other special elements, which create consistency with the rest of the building envelope.

The cladding elements can be designed down to 45 mm thickness and be cast in large format.

MOUNTING PRINCIPLES

The mounting principle applied for the cladding elements is adapted to each individual project. See examples on page 24



SANDWICH ELEMENTS

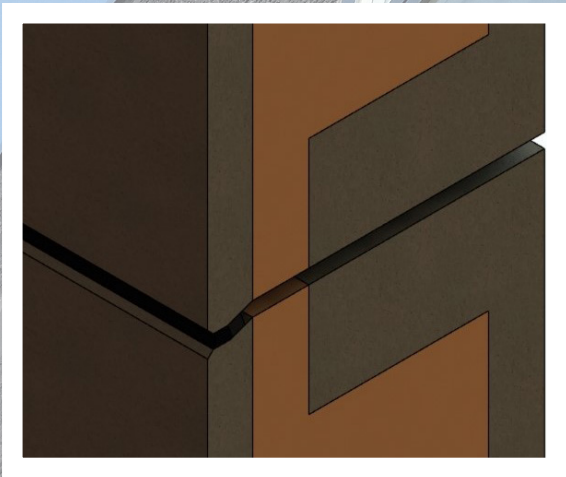
Hi-Con sandwich elements are slender elements with high insulation capabilities that can function with finished surfaces both indoor and outdoor.

The measurements of the slender sandwich elements vary from project to project and can measure down to less than 300 mm in thickness and always live up to the U-value requirements. The slenderness of the elements increases the effective living space of the building and the extra square meters can thus help to increase the value of your building project.

In addition, it is possible to use Hi-Con sandwich elements as heavy load-bearing elements designed to resist fire.

MOUNTING PRINCIPLES

The mounting principle applied for sandwich elements is adapted to each individual project. See example on page 30



BOX MODULES

Box modules in CRC i2® have a long lifecycle, are lightweight, and are insulated according to the U-value requirements. The box modules consist of slender elements which, depending on the individual project, can measure less than 300 mm in thickness and offer the possibility of making finished interior and exterior facades. This means that there is no need for cladding of the exterior facades which – together with the slenderness of the elements – provides more effective square meters for living.

At Hi-Con, it is possible to create box modules in customized sizes and formats and to stack the box modules so that they can be used in a multi-storey building. The modules are self-supporting and are dimensioned for the requested number of floors with the possibility of connecting pipes and power lines.

MOUNTING PRINCIPLES

The mounting principle applied for box modules is adapted to each individual project. See example on page 36